

# THEOS MINI SR/T1



<b>Part number</b>	06222996
<b>Lampholder:</b>	LED
<b>Light Source:</b>	LED
<b>Wattage:</b>	70 W
<b>Finish:</b>	AN-96 / Anthracite gray / Textured
<b>Insulation class:</b>	II
<b>Degree of protection:</b>	IP66
<b>IK-J-xxIP:</b>	IK08 9J xx5
<b>CRI:</b>	70
<b>Kelvin:</b>	4000
<b>Power factor:</b>	$\text{COS}\phi \geq 0,9$
<b>Optic:</b>	ROAD REFLECTOR
<b>Lightsource lumen output:</b>	8608 lm
<b>Luminaire lumen output:</b>	6944 lm
<b>L:</b>	L80
<b>B:</b>	B10
<b>Lifetime:</b>	60000 h
<b>Ta MIN luminaire:</b>	-40°
<b>Ta MAX luminaire:</b>	45°



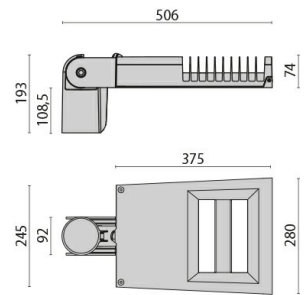
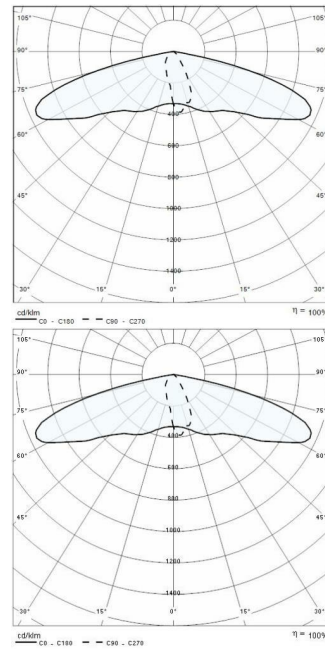
Description

Photometric data

Technical drawings

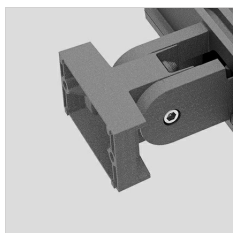
Series of LED street luminaires, comprising:

- Die-cast aluminium housing chemically pre-treated and painted with polyester powder coating
- Die-cast aluminium pole-mounting joint, painted grey, for pole  $\varnothing$  60 mm or 76 mm
- High-transparency polycarbonate lenses for best light transmission
- Diffuser with integrated louvre in UV, heat stabilised, transparent technopolymer
- Optics for narrow roads
- Anti-aging silicone gasket with high resiliency
- Switch splitter automatically disconnects the power supply when the cable cover is opened
- Cable gland M20x1.5 for cables  $\varnothing$  10-  $\varnothing$  14 mm
- High efficiency electronic driver
- Light beam obtained by the combination of multiple LED modules
- Compliant with the UNI 10819 Standard and with the Italian regional laws on light pollution
- Stainless steel external screws
- The "SECURE LIGHT DISTRIBUTION" system guarantees uniform light distribution even in the remote case of LED failures
- Replaceable LED module
- 3000 K and 5000 K available upon request
- Photometric data measure according to UNI EN 13032-4 and IES LM-79-08



## OPTIONAL ACCESSORIES

### THEOS



14174796  
Wall mount bracket THEOS



14077796  
Hot-dipped galvanized wall angled  
steel bracket, cataphoresis and  
polyester powder